

PLC DATA LOGGING

DATA COLLECTION

Automated Data Collection for Manufacturing will help you:

- Data collection at site by USB Flash or store in PC.
- Reduce the administrative burden of regulatory compliance.
- Establish a plant-wide strategy for managing process information from across your operation.
- Collect 100 to 100,000 or more tags from a wide variety of process control device.
- Serial or Ethernet Interfaces to wide range of PLCs and other devices with various brand.
- Data Storage support SQL Server, Data Traceability and USB Drive / SD Card Backup.

Feature :

Trend Viewer

Manages up to eight pens with independent legends, scaling and line styles. Both real-time and historic data are supported.

Log Viewer

Historical data in user configurable lists. Flexible filtering and search facilities are available to easily find a specific occurrence of an event.

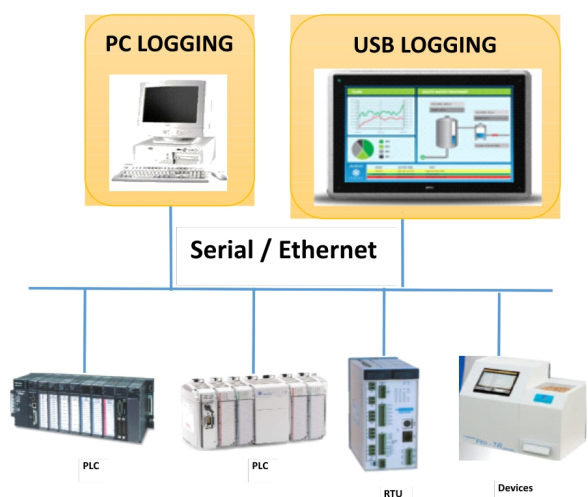
Alarm Viewer

Comprehensive alarm management. Flexible alarm filtering uses a wide range of criteria such as area, level and type. Users can acknowledge and mask alarms using the integrated toolbar.

Recording & Event Logging

Real time data is recorded in standard database or Excel format. Data may be recorded upon value change or periodically. Beside using database format, possible using Excel format.

Architecture



DATA COLLECTION

Collect everything today, because you don't know what will be important to you tomorrow. Similar to black box flight recorders, process historians are capable of recording measurements from across your entire plant.

However, you need an industrial strength historian to enable you not only to collect data quickly, but also to retrieve that data quickly and in a variety of ways. After recording all of your plant's measurements, complementary technology is needed to transform the data into information for decision making.

Data Collection is the foundation for intelligent production management. The way is the most versatile, reliable and scalable method for managing your production data.

Specification

Alarm Distribution

- Easy-to-use Alarm Management Interface
- Send Alarm Message through SMS, Email, APP

Data Storage

- Support SQL Server
- Data Traceability
- USB Drive and SD Card Backup

Data Security

- Level Authorization

Data Access

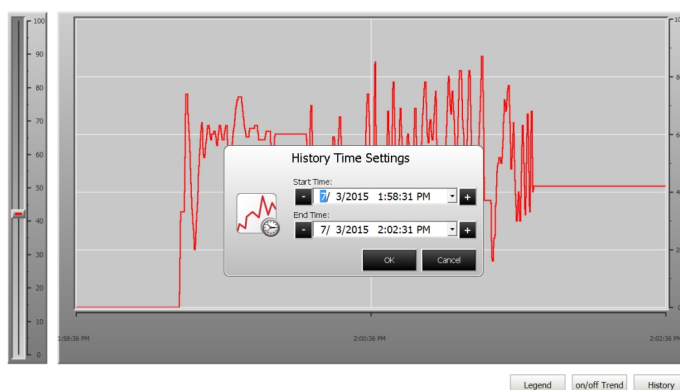
- Web Server and Customized Web Page by Java Script
- Database File Export
- Support VNC to Remote Control and Monitor

Data transmission

- FTP Server
- Scheduler

Time	NO	SALES	TSSG	GLUCOPRO	PHENEX	BINE	VISCOSITY	PH	SG
6/23/2015 14:33	0	0	0	0	0	0	0	0	0
6/23/2015 14:34	10	0	0	0	0	0	0	0	0
6/23/2015 14:34	10	10	0	0	0	0	0	0	0
6/23/2015 14:34	10	10	0	0	0	0	0	0	0
6/23/2015 14:34	10	10	0	0	0	0	0	0	0
6/23/2015 14:34	10	10	0	0	0	0	0	0	0
6/23/2015 14:34	10	10	0	0	0	0	0	0	0
6/23/2015 14:34	10	10	0	0	0	0	0	0	0
6/23/2015 14:34	10	10	0	0	0	0	0	0	0
6/23/2015 14:34	10	10	0	0	0	0	0	0	0
6/23/2015 14:35	256	10	10	10	10	10	10	10	10
6/23/2015 14:35	256	10	140	10	10	10	10	10	10
6/23/2015 14:35	256	10	140	15	10	10	10	10	10
6/23/2015 14:35	256	10	140	15	10	256	10	10	10
6/23/2015 14:35	256	10	140	15	10	256	25	10	10
6/23/2015 14:36	256	10	140	15	10	256	25	12	10
6/23/2015 14:36	256	10	140	15	10	256	25	12	23
6/23/2015 14:36	0	0	0	0	0	0	0	0	0
6/23/2015 14:36	12	0	0	0	0	0	0	0	0
6/23/2015 14:36	12	45	0	0	0	0	0	0	0
6/23/2015 14:36	12	45	0	0	13	0	0	0	0
6/23/2015 14:36	12	45	0	0	13	0	68	0	0
6/23/2015 14:36	12	45	0	0	13	0	68	0	4
6/23/2015 14:36	256	10	140	15	10	256	25	12	23

Pict. 2. Data input to Ms. Excel



Pict. 3. Trend History



PT. Jakarta Process Automation

Phone : +6221-4707038

Fax : +6221-47860587

Office : Jl. Rawamangun Raya 1A, Jakarta Timur 13220, Indonesia

Email : info@jpa-automation.com

Website : www.jpa-automation.com